

Managing Transition from Incarceration to Enhance Public Safety



20 y 21 de Septiembre de 2011
Buenos Aires, Argentina

Jesse Jannetta

Research Associate

202.261.5593/ jjannetta@urban.org

www.urban.org

**Congreso
Latinoamericano de
Observatorios,
Prácticas Promisorias
y Resultados en
Seguridad Ciudadana
Local**

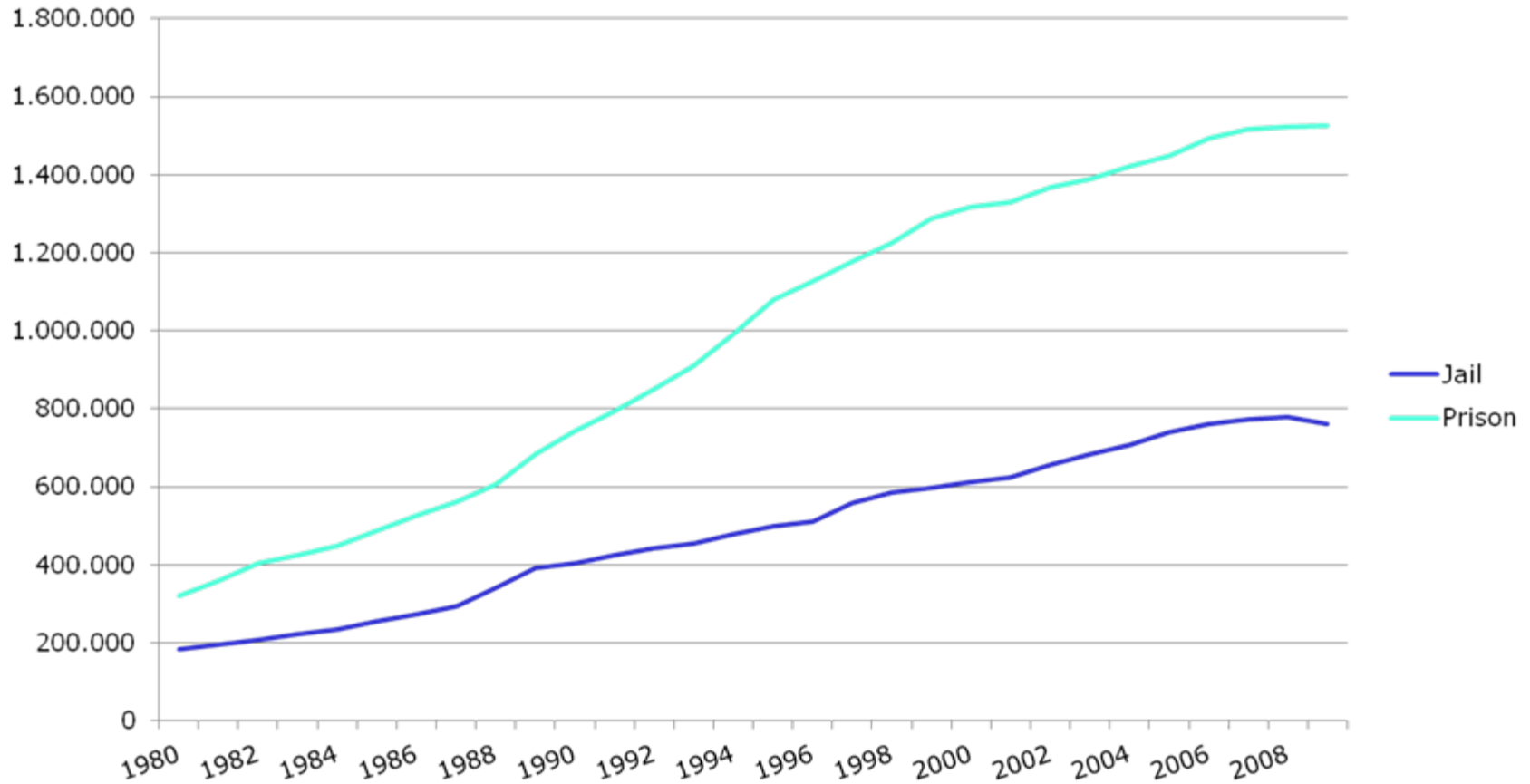
The views expressed are those of the authors and should not be attributed to The Urban Institute, its trustees, or its funders.



URBAN INSTITUTE
Justice Policy Center

Incarceration Has Greatly Increased in the United States

United States Incarcerated Population

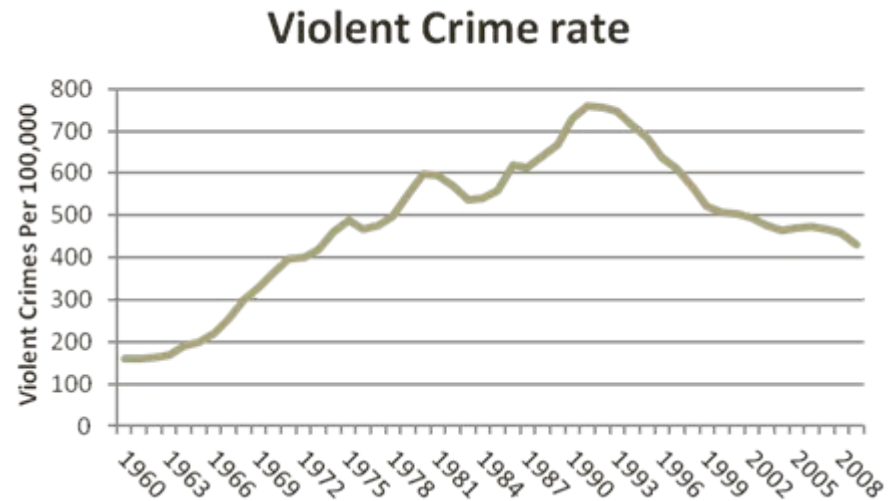


Source: United States Bureau of Justice Statistics

The views expressed are those of the authors and should not be attributed to the Urban Institute, its trustees, or its funders.

This Has Produced Some Benefit...

- Violent crime at the lowest level since 1973
- Estimated contribution of incarceration to the crime decline around 25%
- Declining marginal benefit

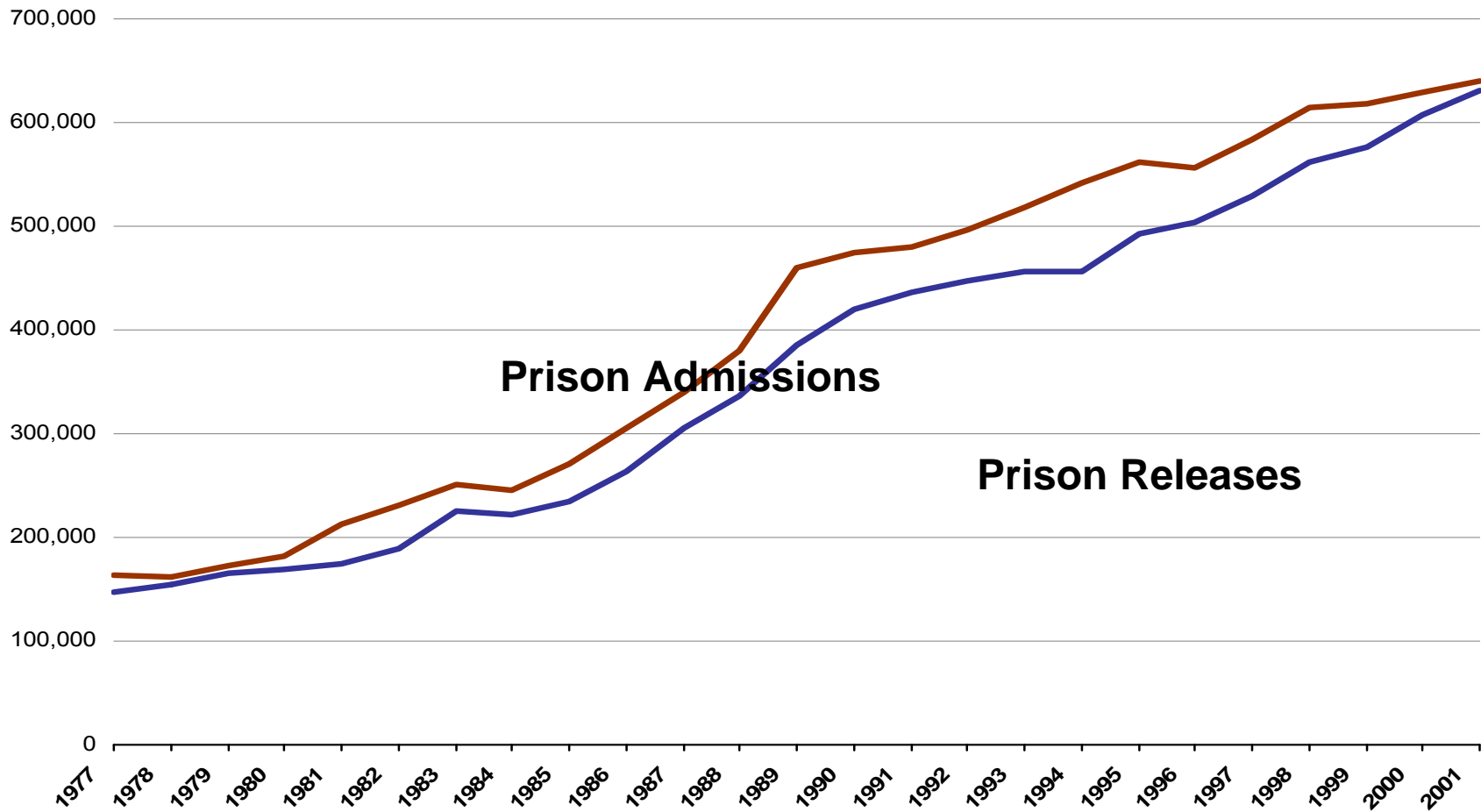


Source: FBI Uniform Crime Reporting Data

...But at Tremendous Social Cost

- Correctional spending increased 270% from 1982 to 2007
 - Local governments account for 32% of this spending, state governments 59%
- Weakened labor markets
- Reduced the rate of marriage among African Americans
- Increased economic strain on families
- Damaged life chances of children of prisoners
 - As many as 2.3 million have a parent in prison
- Negative public health impacts
- Fed hostility between low-income urban communities and the justice system
- Disenfranchisement

Public Safety Bottom Line: They All Come Back



Source: The Urban Institute, 2001. Based on BJS National Prisoner Statistics.

Research Has Identified “What Works” in Corrections

Reducing Crime With Evidence-Based Options: What Works, and Benefits & Costs

Washington State Institute for Public Policy Estimates as of October, 2006	Effect on Crime Outcomes Percent change in crime outcomes, & the number of evidence-based studies on which the estimate is based (in parentheses) (1)	Benefits and Costs (Per Participant, Net Present Value, 2006 Dollars)			
		Benefits to Crime Victims (of the reduction in crime) (2)	Benefits to Taxpayers (of the reduction in crime) (3)	Costs (marginal program cost, compared to the cost of alternative) (4)	Benefits (total) Minus Costs (per participant) (5)
Notes: “n/e” means not estimated at this time. Prevention program costs are partial program costs, pro-rated to match crime outcomes.					
Programs for People in the Adult Offender System					
Vocational education in prison	-9.0% (4)	\$8,114	\$6,806	\$1,182	\$13,738
Intensive supervision: treatment-oriented programs	-16.7% (11)	\$9,318	\$9,369	\$7,124	\$11,563
General education in prison (basic education or post-secondary)	-7.0% (17)	\$6,325	\$5,306	\$962	\$10,669
Cognitive-behavioral therapy in prison or community	-6.3% (25)	\$5,658	\$4,746	\$105	\$10,299
Drug treatment in community	-9.3% (6)	\$5,133	\$5,495	\$574	\$10,054
Correctional industries in prison	-5.9% (4)	\$5,360	\$4,496	\$417	\$9,439
Drug treatment in prison (therapeutic communities or outpatient)	-5.7% (20)	\$5,133	\$4,306	\$1,604	\$7,835
Adult drug courts	-8.0% (57)	\$4,395	\$4,705	\$4,333	\$4,767
Employment and job training in the community	-4.3% (16)	\$2,373	\$2,386	\$400	\$4,359
Electronic monitoring to offset jail time	0% (9)	\$0	\$0	-\$870	\$870
Sex offender treatment in prison with aftercare	-7.0% (6)	\$6,442	\$2,885	\$12,585	-\$3,258
Intensive supervision: surveillance-oriented programs	0% (23)	\$0	\$0	\$3,747	-\$3,747
Washington’s Dangerously Mentally Ill Offender program	-20.0% (1)	\$18,020	\$15,116	n/e	n/e
Drug treatment in jail	-4.5% (9)	\$2,481	\$2,656	n/e	n/e
Adult boot camps	0% (22)	\$0	\$0	n/e	n/e
Domestic violence education/cognitive-behavioral treatment	0% (9)	\$0	\$0	n/e	n/e
Jail diversion for mentally ill offenders	0% (11)	\$0	\$0	n/e	n/e
Life Skills education programs for adults	0% (4)	\$0	\$0	n/e	n/e

Source: Washington State Institute for Public Policy

Can We Realize the Public Safety Promise of Corrections at a Large Scale?

- Requires coordination of the highly fragmented U.S. justice system
- Assess risk and need factors and allocate resources accordingly
 - Focus on highest-risk to re-offend
 - Target criminogenic needs
- Use cognitive-behavioral methods to build skills for better decision-making
- Enhance motivation and deliver incentives
- Build case management around reentry plans
- Engage pro-social supports
- Measure practices and provide feedback

Transition Projects to Build a Systems Approach

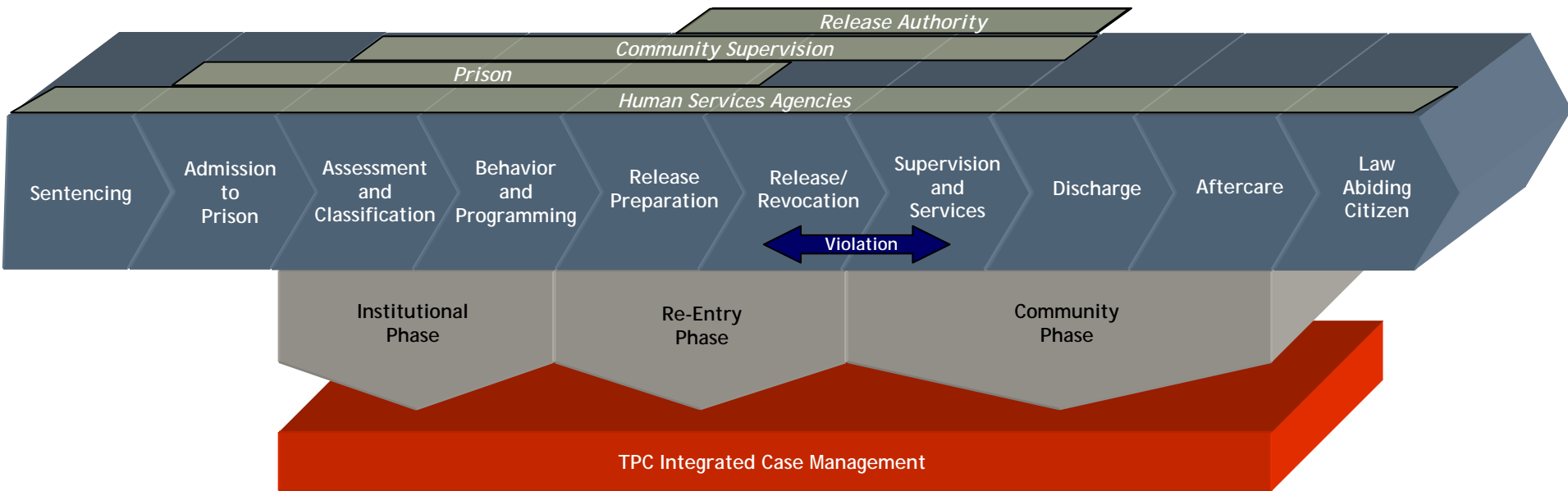
Transition from Prison to Community (TPC)
Initiative launched in 2000

Transition from Jail to Community (TJC)
launched in 2008

Why is a systems approach necessary?

- Individuals cross system boundaries, the reentry process must do so too
- Makes strategic allocation of resources possible
- Increase consistency and reduce contradictions
- No single player has all the information to plan work or prove effectiveness

The Transition from Prison to Community Model





TPC Seeks to Reorient Correctional Practice

From:

Custody/monitoring →

Silos →

Agency isolation →

Unproven methods →

Measuring inputs →

Offender failure →

To:

Behavior change

Coherent process

Collaboration

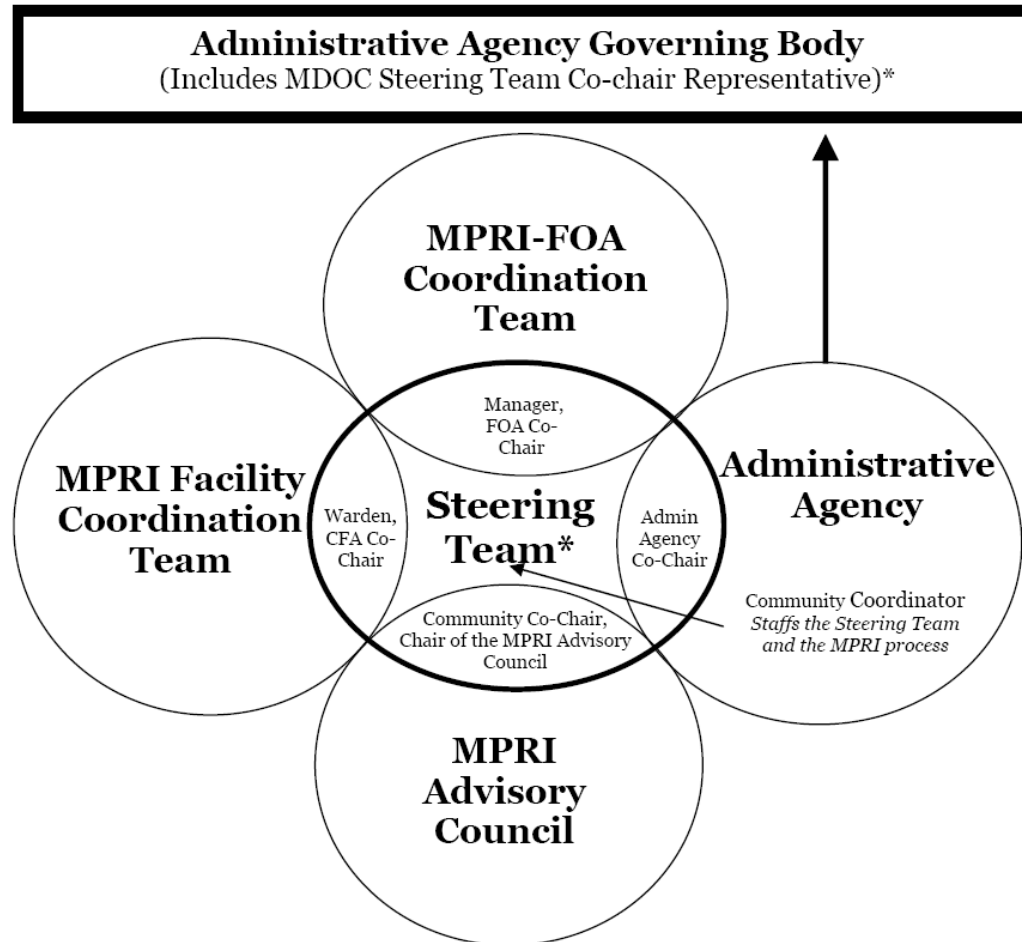
Evidence-based practice

Measuring outcomes

Offender success and
public safety

Infusing Local Governance into a State-Level Transition Effort

Michigan Prisoner Reentry Initiative (MPRI) Local Governance Structure



Success in TPC States

- Michigan
 - Inmates released through reentry initiative 33% less likely to return to prison
 - Inmate population reduced by 12%
 - Closed 20 facilities
- Missouri
 - Two-year return to prison rate reduced steadily from 46% in 2004 to 36% in 2009
- Oregon
 - Lowest recidivism rate of 41 reporting states for 2004 cohort

Differences Between Jail and Prison...

- Prison
 - Operated by state or federal government
 - House sentenced felons
 - Sentences of 1 year or more
- Jail
 - Operated at county/municipal level
 - House diverse population
 - Pre-trial
 - Sentenced misdemeanants
 - Supervision violators
 - Usually sentences of 1 year or less

...Lead to Different Transition Opportunities and Challenges

- Prison
 - Longer period of time to work with inmates
 - Often located far from communities to which inmates will return
 - Post-release supervision common
- Jail
 - Short period to work with inmates (less than 20% stay a month or more)
 - Located in or near communities to which inmates will return
 - Post-release supervision uncommon

TJC Data-Driven Triage Approach

Process Measures

Screening

Of all individuals booked into the jail, how many were screened for risk of re-offending?

- How many should have been screened but were not?
- For what reasons were they not screened?

Assessment

Of all individuals screened and identified as needing assessment, how many were assessed?

- How many should have been assessed but were not?
- For what reasons?

Case Transition

Planning/Targeted Interventions
Of all individuals assessed as High or Medium Risk, how many were referred for an array of services appropriate for their individual risk and needs?

How many received transition case plans?

How many completed in-jail services?

How many were referred for services in the community?

How many engaged in those services?

How many completed those services?

Individual Arrested and Booked

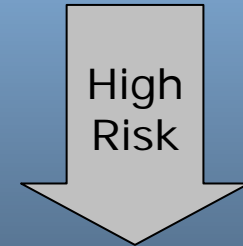
1. Screened for risk to re-offend



Outcome Measures

No outcome data needed

2. Assessed for criminogenic risk and needs



No outcome data needed

3. Transition case plans developed/ implemented

- in jail services
- In community services



Reintegration Outcomes

- **reduced recidivism**
- **increased employment**
- increased housing stability
- reduced drug/alcohol
- improved mental health

Strategies for Local Jail Transition

- Community service providers meet clients before release
- Universal case plans that follow the offender
- Jail housing units devoted to programs
- Multi-agency case conferencing
- Continuity of program approach in the jail and the community

TJC-Building a System

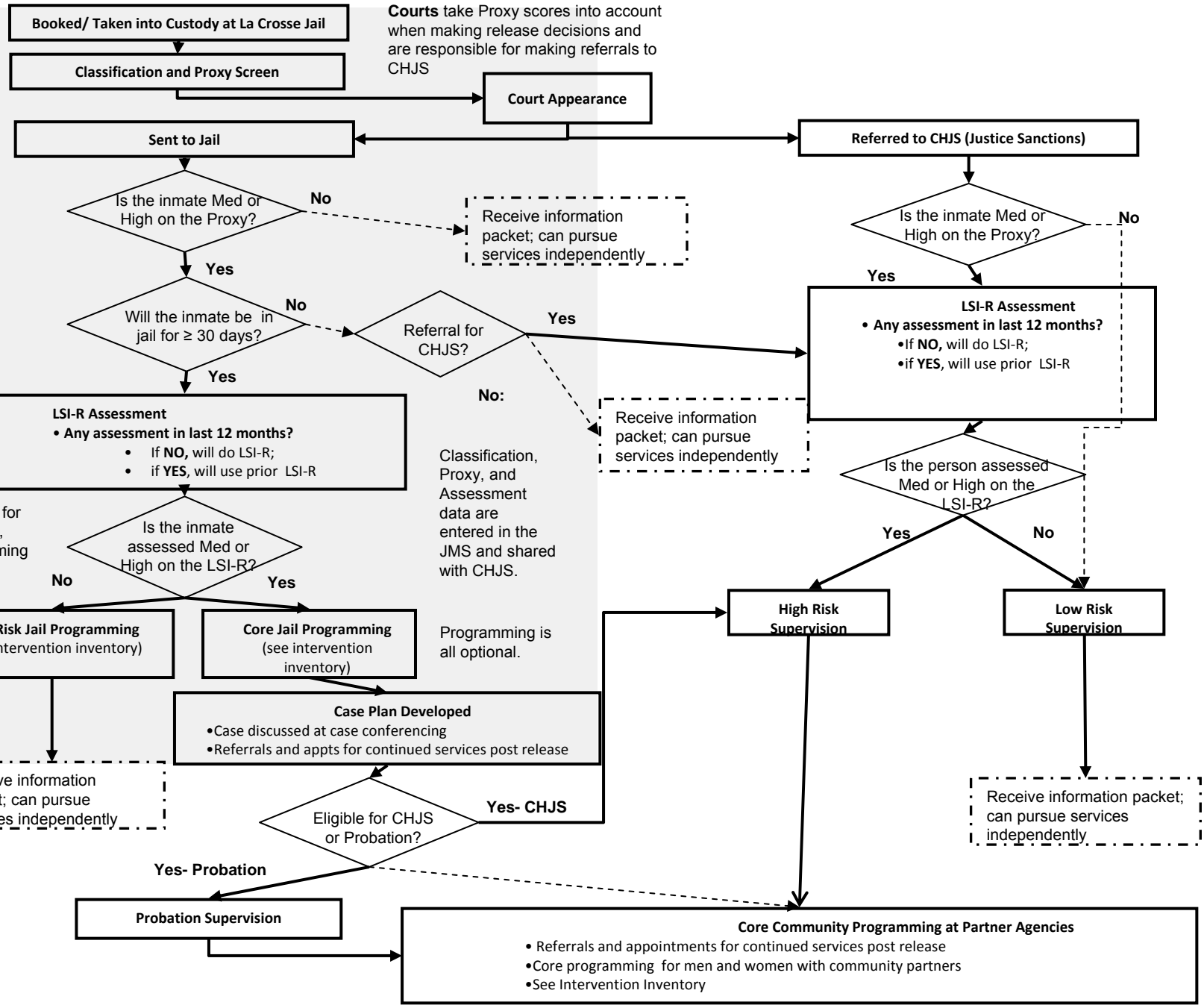
Proxy screen scores inmate's risk of reoffending based on current age, age at first arrest and # of priors. 1-4=low risk; 5-6=medium; 7-8=high risk. Proxy scores are taken into account by judges.

Process is same for men and women, though programming may vary

Courts take Proxy scores into account when making release decisions and are responsible for making referrals to CHJS

Classification, Proxy, and Assessment data are entered in the JMS and shared with CHJS.

Programming is all optional.



Booked/ Taken into Custody at La Crosse Jail

Classification and Proxy Screen

Court Appearance

Sent to Jail

Referred to CHJS (Justice Sanctions)

Is the inmate Med or High on the Proxy?

Is the inmate Med or High on the Proxy?

Will the inmate be in jail for ≥ 30 days?

Referral for CHJS?

LSI-R Assessment
 • Any assessment in last 12 months?
 • If NO, will do LSI-R;
 • If YES, will use prior LSI-R

LSI-R Assessment
 • Any assessment in last 12 months?
 • If NO, will do LSI-R;
 • If YES, will use prior LSI-R

Is the inmate assessed Med or High on the LSI-R?

Is the person assessed Med or High on the LSI-R?

Low Risk Jail Programming
 (see intervention inventory)

Core Jail Programming
 (see intervention inventory)

Case Plan Developed
 • Case discussed at case conferencing
 • Referrals and appts for continued services post release

Eligible for CHJS or Probation?

High Risk Supervision

Low Risk Supervision

Receive information packet; can pursue services independently

Receive information packet; can pursue services independently

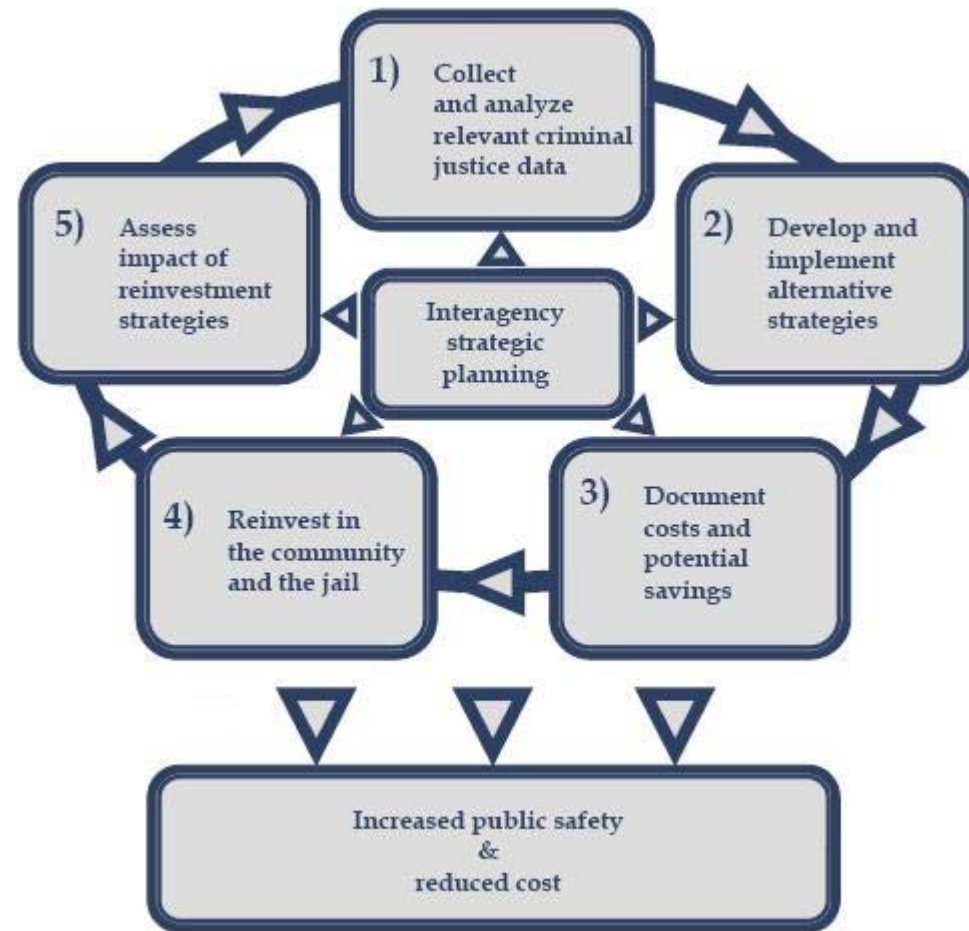
Probation Supervision

Core Community Programming at Partner Agencies
 • Referrals and appointments for continued services post release
 • Core programming for men and women with community partners
 • See Intervention Inventory

Shifting Resources from Incarceration: Justice Reinvestment

- Analyze data to identify drivers of corrections spending
- Develop policy options to address those drivers
- Invest realized savings

Justice Reinvestment at the Local Level Model



Key Resources

- Transition from Prison to Community Initiative, www.prisontransition.com
- Transition from Jail to Community Initiative, www.jailtransition.com
- Justice Reinvestment at the Local Level, <http://www.urban.org/center/jpc/justice-reinvestment/>
- National Reentry Resource Center, www.nationalreentryresourcecenter.org
- Implementing Evidence-Based Policy and Practice in Community Corrections, <http://static.nicic.gov/Library/024107.pdf>